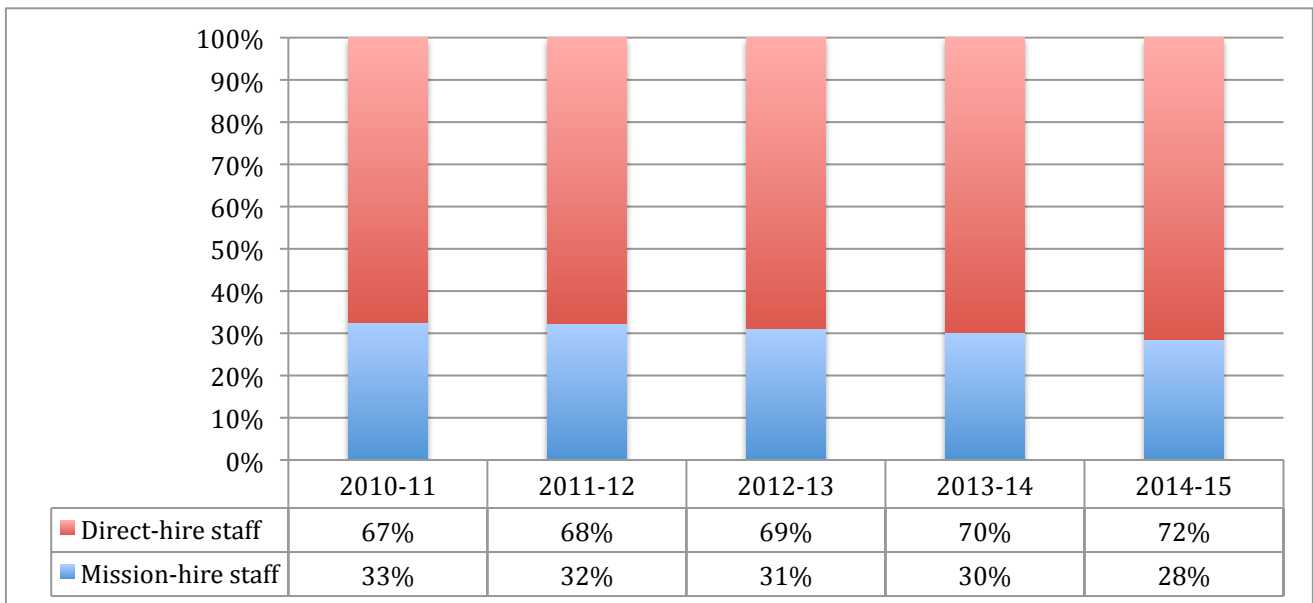


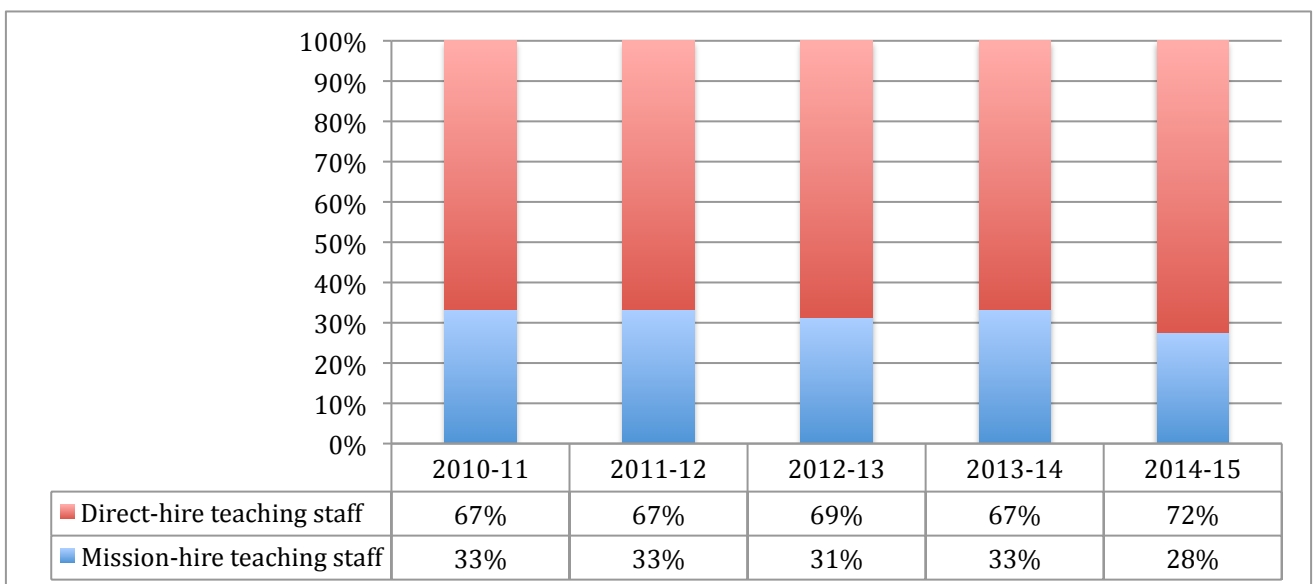
## Direct-hire/Mission-hire Staff (Total)

Since 2010-11, the percentage of direct-hire staff has been greater than the percentage of mission-hire staff. The percentage of direct-hire staff has increase, and the percentage of mission-hire staff has decreased.



## Direct-hire/Mission-hire Teaching Staff

Since 2010-11, the percentage of direct-hire teaching staff has been greater than the percentage of mission-hire teaching staff. The percentages of direct-hire teaching staff and mission-hire teaching staff have been somewhat steady.



## Direct-hire/Mission-hire Support Staff

Since 2010-11, the percentage of direct-hire support staff has been greater than the percentage of mission-hire support staff. Generally speaking, the percentages of direct-hire support staff and mission-hire support staff been somewhat steady.

