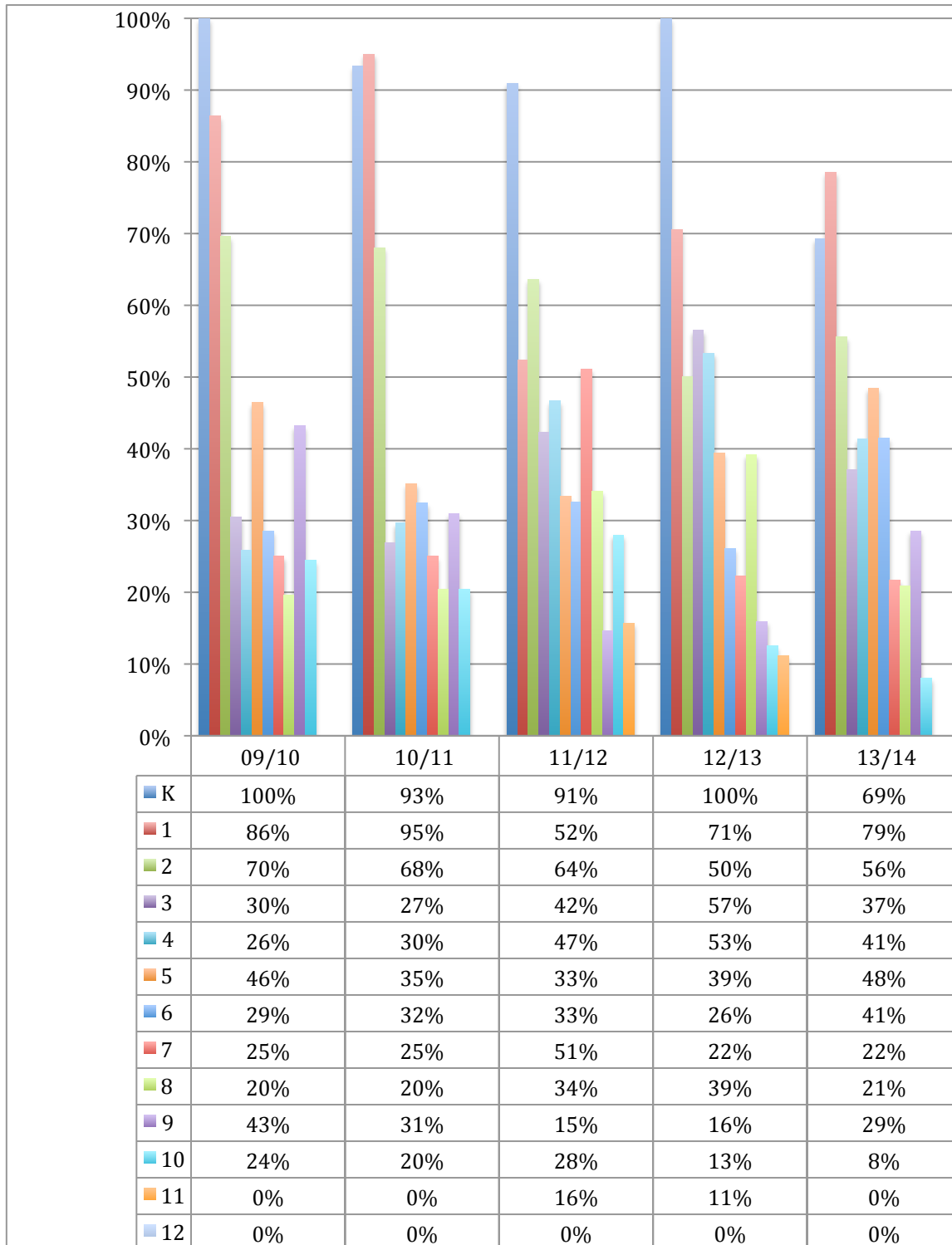


Percentage of K-12 Students Receiving EAL (English as an Additional Language) Support (by Grade)

In the past 5 years, the percentage of students receiving EAL has tended to decrease as students moved from kindergarten through 11th grade.

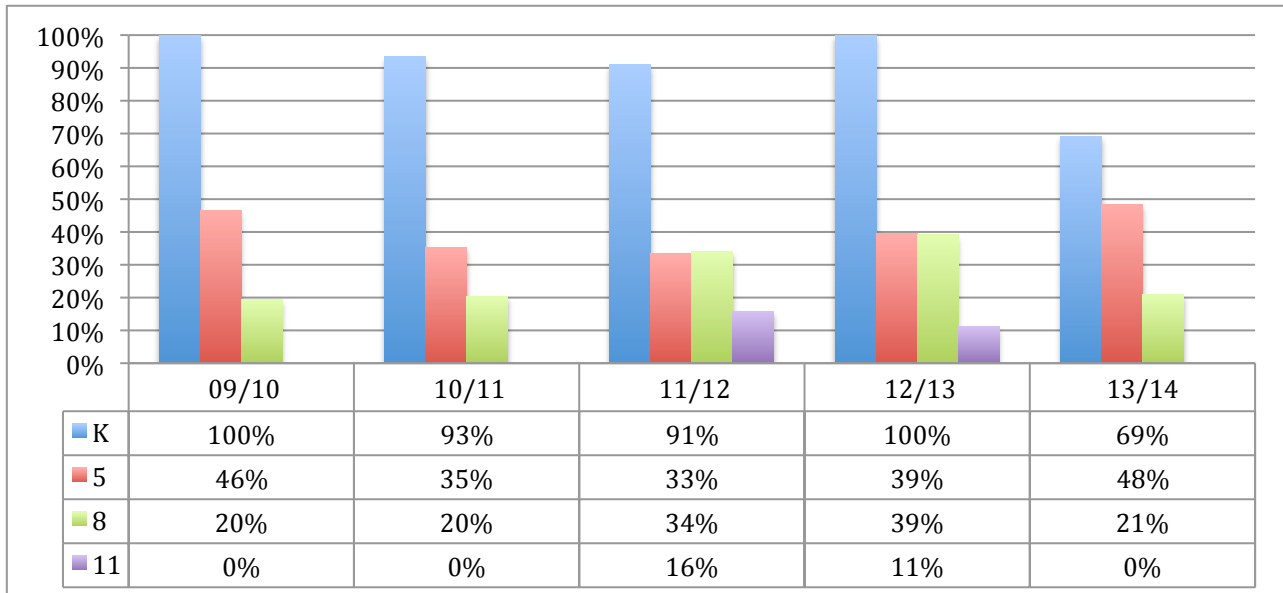
Note: CAJ does not provide EAL support for 12th grade.



Percentage of Students Receiving EAL Support (K, 5, 8, 11)

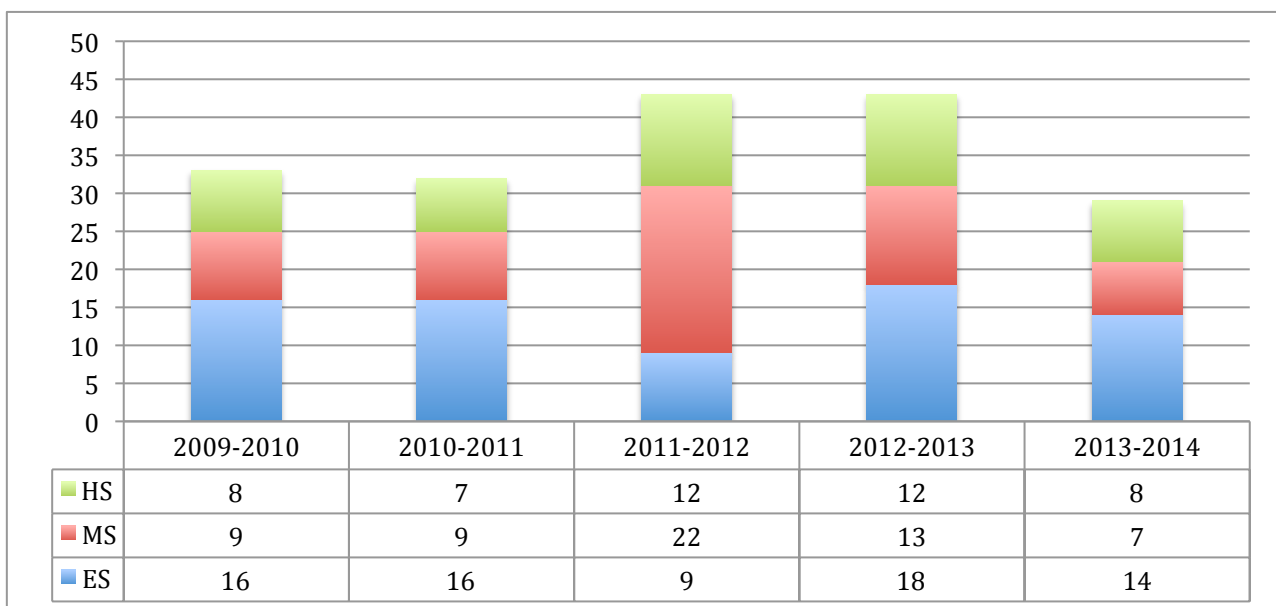
In the past 5 years, the percentage of students receiving EAL support has tended to decrease as students moved from kindergarten to 11th grade.

Note: CAJ did not provide EAL support for 11th grade in SY 2009-2010 and SY 2010-2011.



Students Exiting EAL by School Division

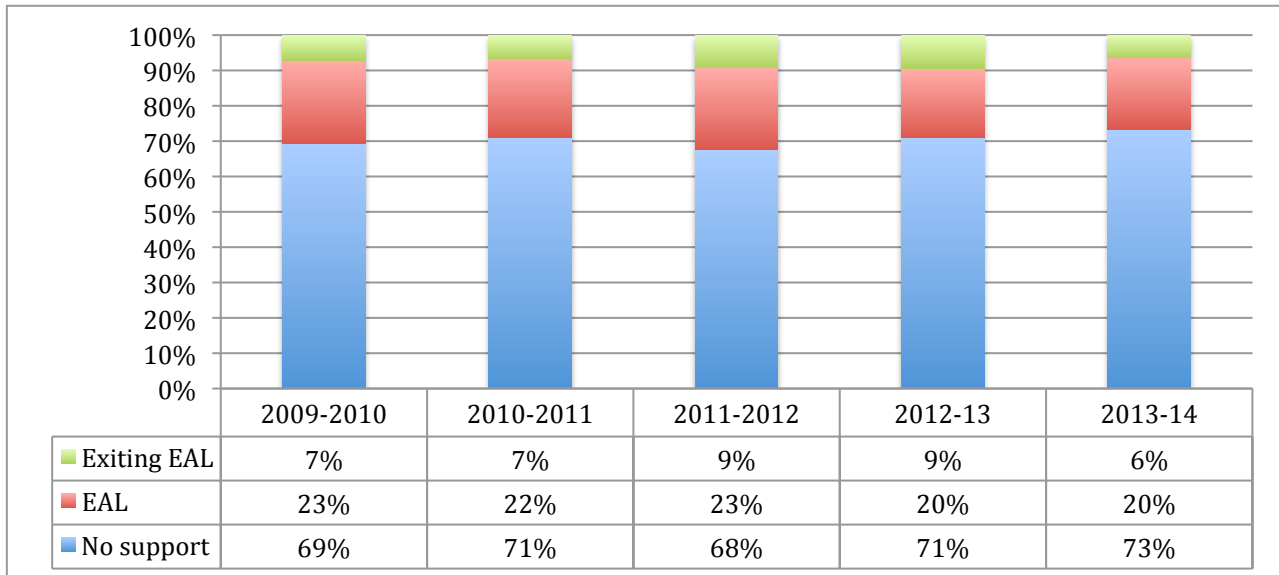
Since SY 2009-2010, the number of students exiting EAL has ranged from 29 to 43, the number of high school students exiting EAL has ranged from 7 to 12, the number of middle school students exiting EAL has ranged from 7 to 22, and the number of elementary students exiting EAL has ranged from 9 to 18.



Percentage of K-12 Students Exiting & Continuing in EAL

Since SY 2009-2010, the percentage of K-12 students exiting EAL has remained steady and the percentage of K-12 students continuing in EAL has remained steady.

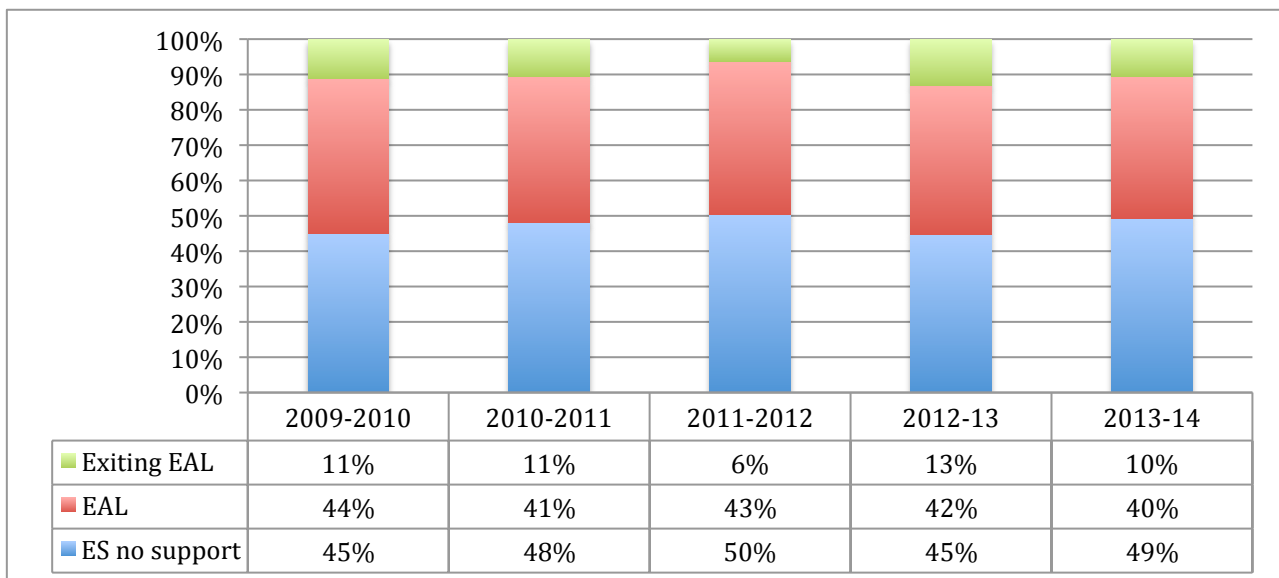
Note: The percentage of students receiving EAL support = Exiting EAL (green) + EAL (red).



Percentage of ES Students Exiting & Continuing in EAL

Since SY 2009-2010, the percentage of elementary students exiting EAL has ranged from 6% to 13%, and the percentage of elementary students continuing in EAL has remained steady.

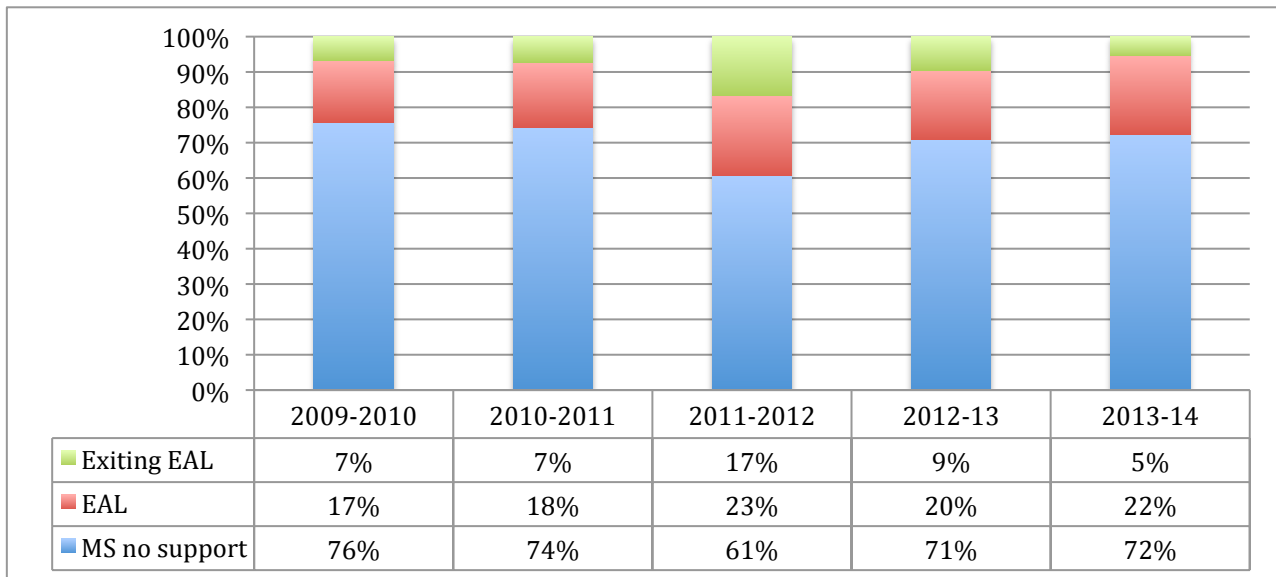
Note: The percentage of students receiving EAL support = Exiting EAL (green) + EAL (red).



Percentage of MS Students Exiting & Continuing in EAL

Since SY 2009-2010, the percentage of middle school students exiting EAL ranged from 5% to 17%, and the percentage of middle school students continuing in EAL has ranged from 17% to 23%.

Note: The percentage of students receiving EAL support = Exiting EAL (green) + EAL (red).



Percentage of HS Students Exiting & Continuing in EAL

Since SY 2009-2010, the percentage of high school students exiting EAL has remained steady and the percentage of high school students continuing in EAL has decreased.

Note: The percentage of students receiving EAL support = Exiting EAL (green) + EAL (red).

