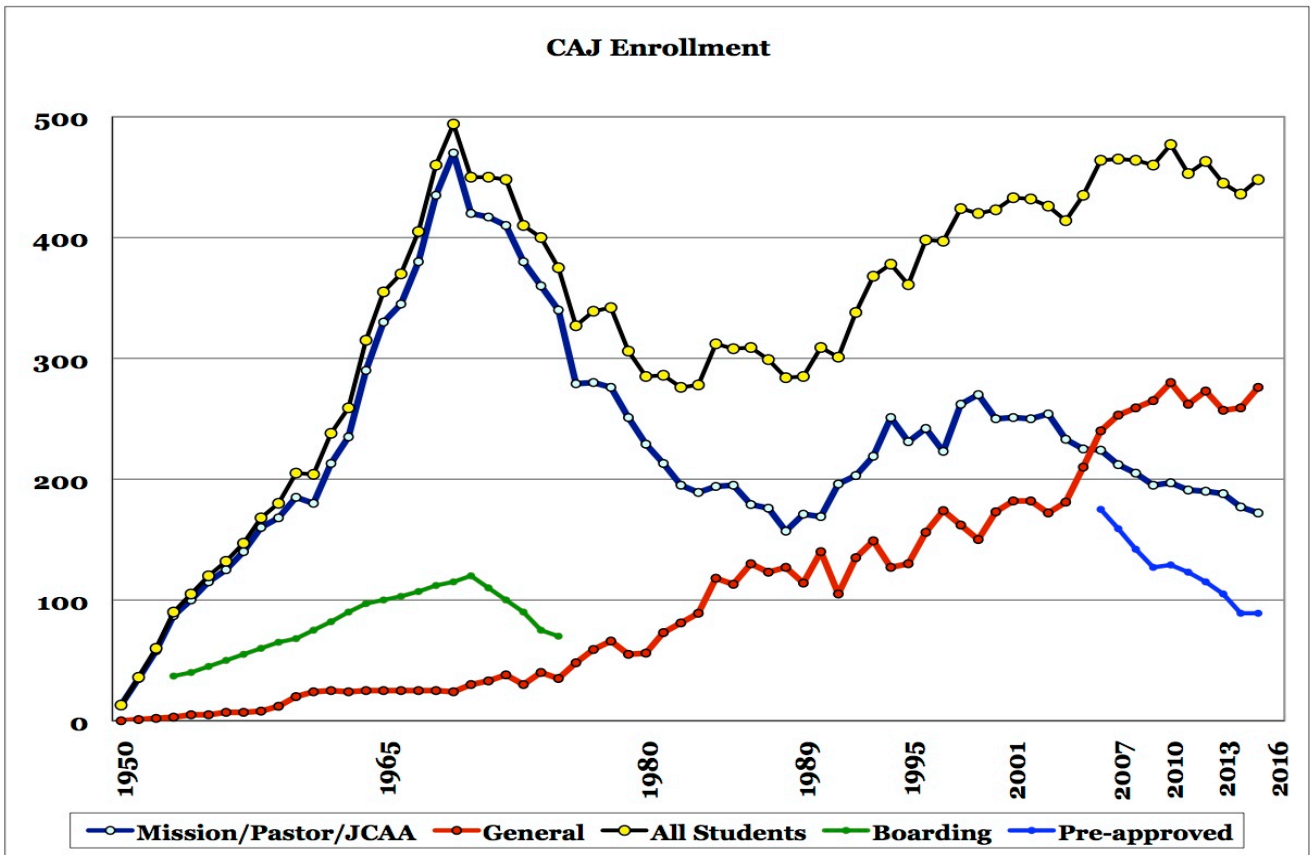


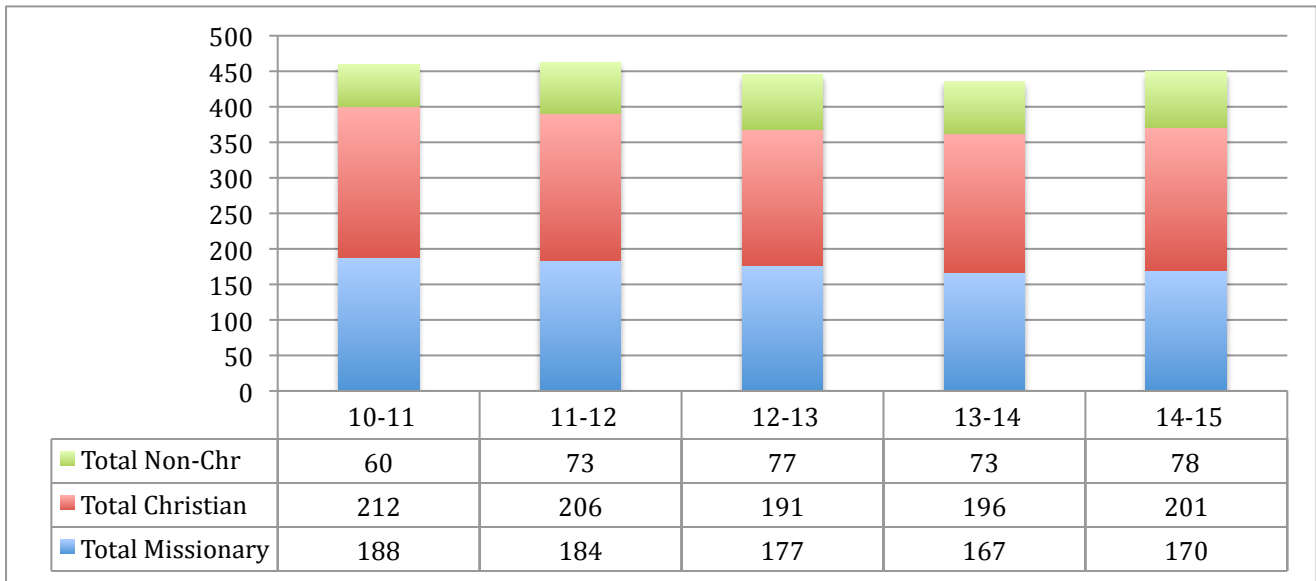
# Enrollment History

In recent years, the school's enrollment has been over 430, with a decreasing number of students from mission/pastor/JCAA families and with an increasing number of students from business families (see "general"). Enrollment has decreased since 2010.



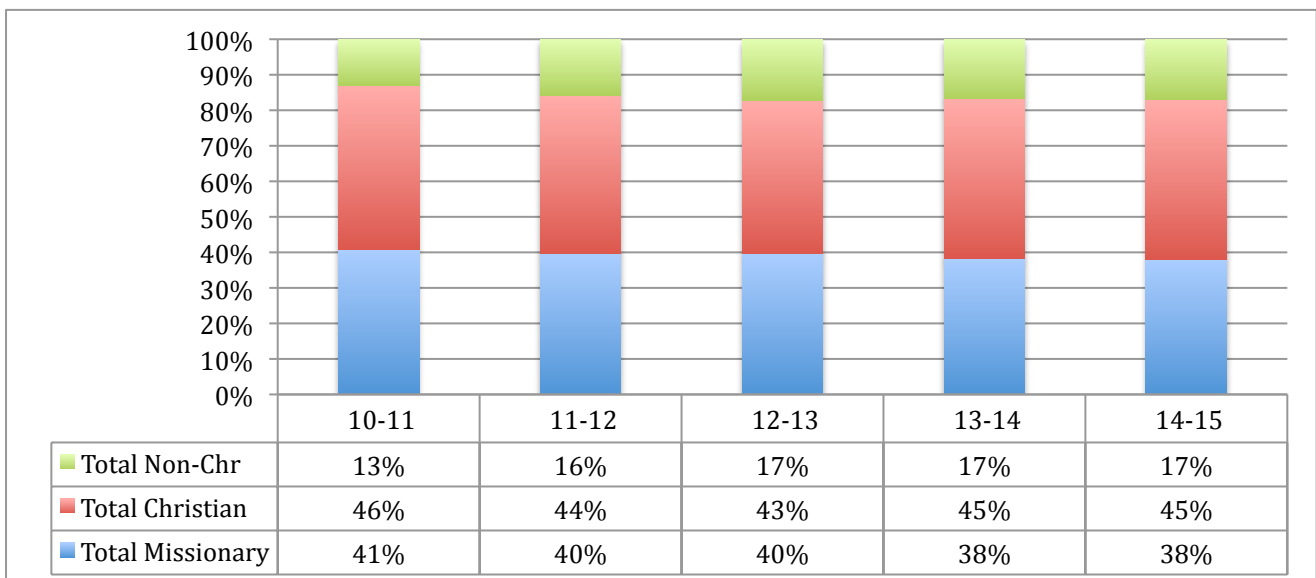
## Number of Students by Admissions Category

Since SY 2010-2011, the number of students from non-Christian homes has increased while the number of students from Christian homes and missionary homes has decreased.



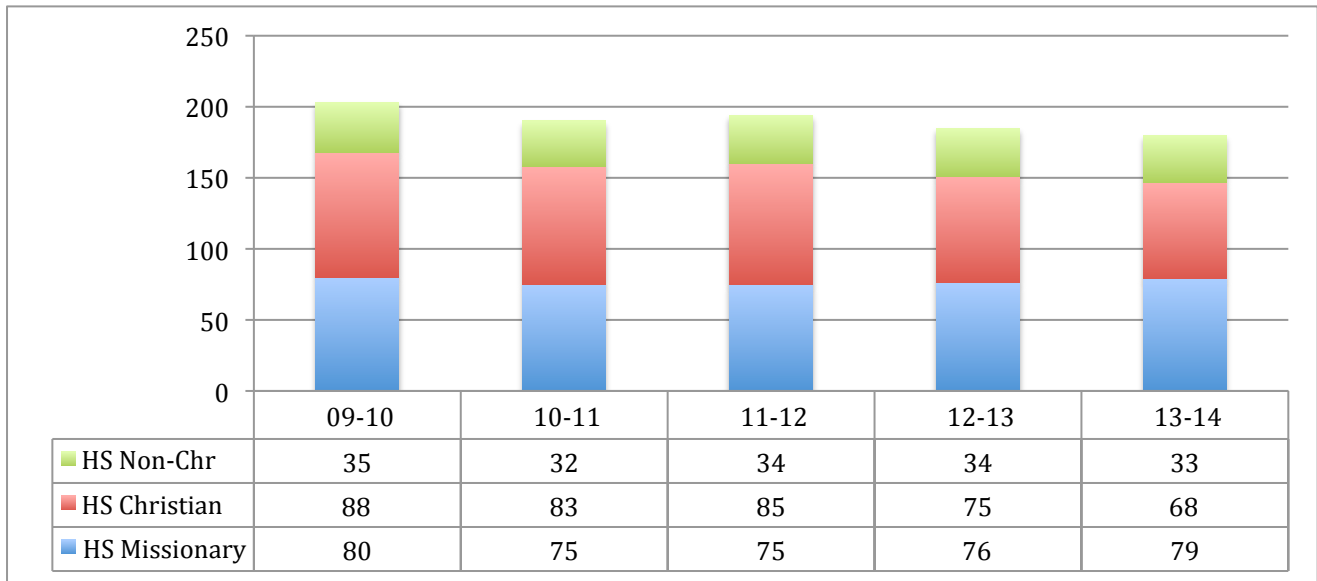
## Percentage of Students by Admissions Category

Since SY 2010-2011, the percentage of students from non-Christian homes has increased, the percentage of students from Christian homes has ranged from 43% to 46% and the percentage of students from missionary homes has ranged from 38% to 41%.



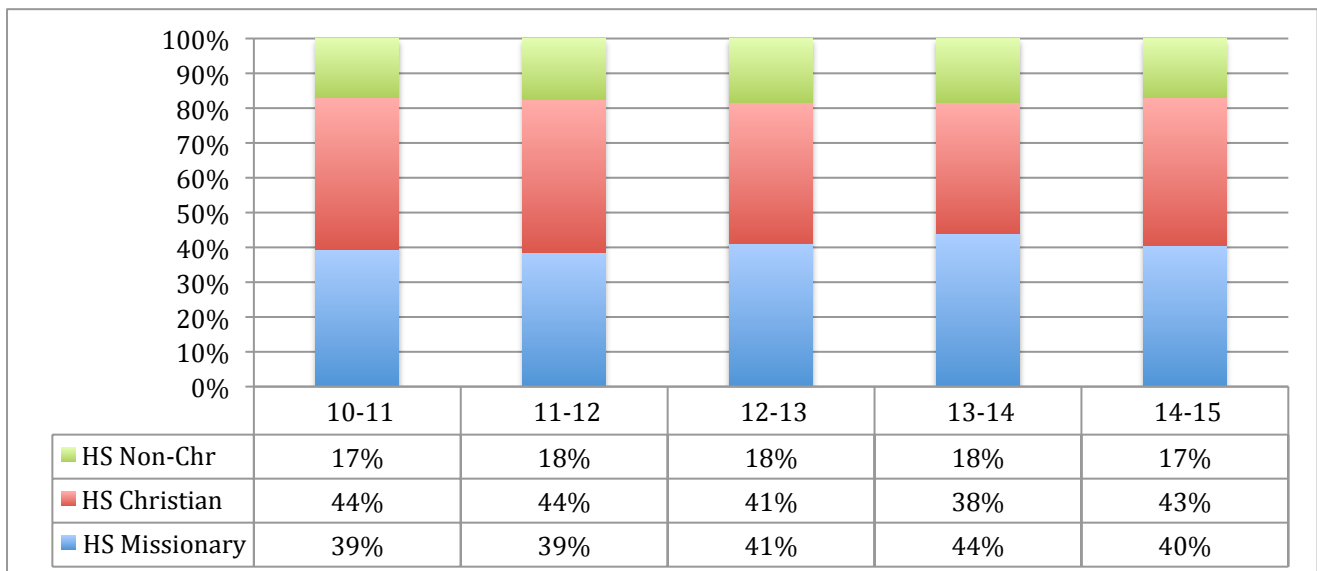
## Number of High School Students by Admissions Category

Since SY 2010-2011, the number of students from non-Christian homes and from missionary homes has remained steady while the number of students from Christian homes has decreased.



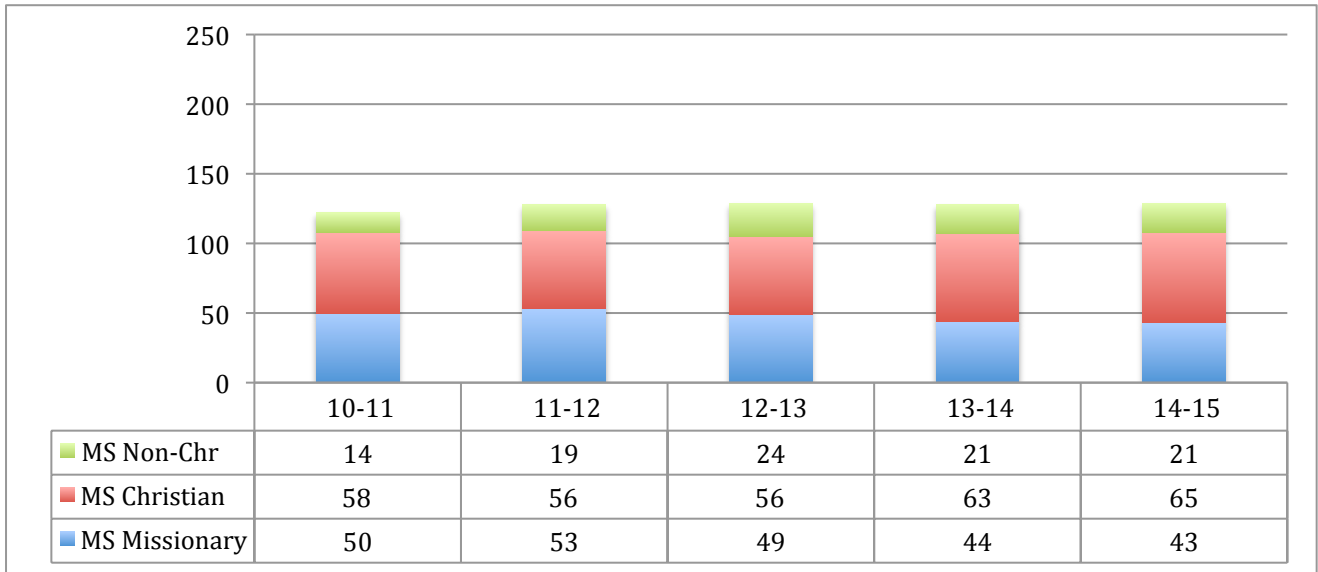
## Percentage of High School Students by Admissions Category

Since SY 2010-2011, the percentage of students from non-Christian homes has remained steady, the percentage of students from Christian homes has ranged from 38% to 44%, and the percentage of students from missionary homes has ranged from 39% to 44%.



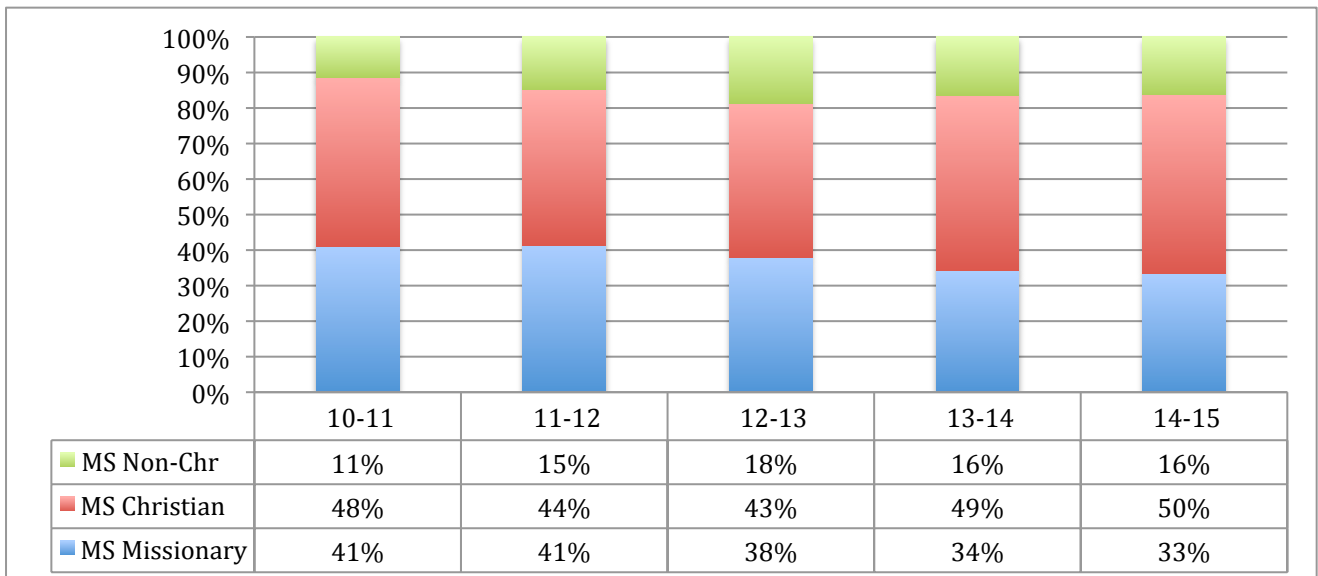
## Number of Middle School Students by Admissions Category

Since SY 2010-2011, the number of students from non-Christian homes has increased, the number of students from Christian homes has increased, and the number of students from missionary homes has decreased.



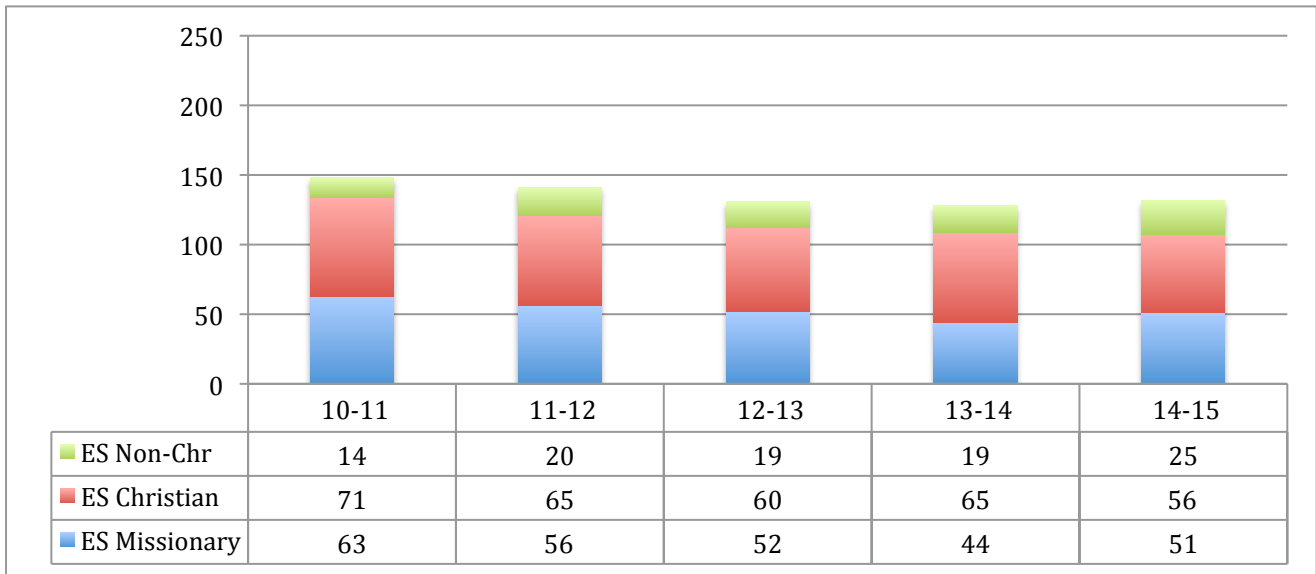
## Percentage of Middle School Students by Admissions Category

Since SY 2010-2011, the percentage of students from non-Christian homes has ranged increased, the percentage of students from Christian homes has ranged from 43% to 50% and the number of students from missionary homes has decreased.



## Number of Elementary Students by Admissions Category

Since SY 2010-2011, the number of students from non-Christian homes has increased while the number of students from Christian homes and missionary homes has decreased.



## Percentage of Elementary Students by Admissions Category

Since SY 2010-2011, the percentage of students from non-Christian homes has increased, the percentage of students from Christian homes has ranged from 42% to 51%, and the percentage of students from missionary homes has decreased.

